

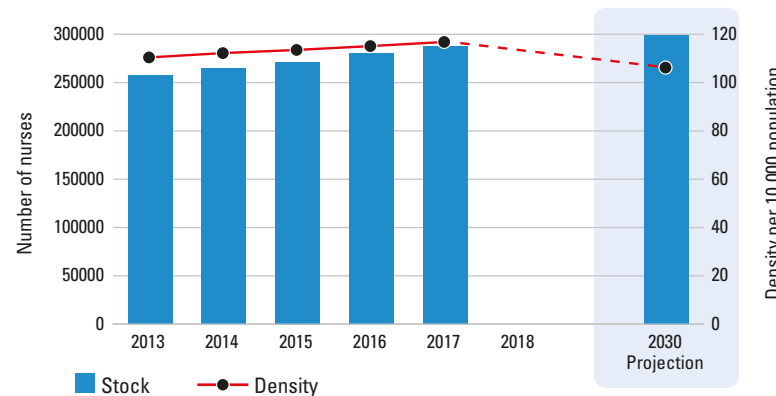
This map is an approximation of actual country borders.

Australia

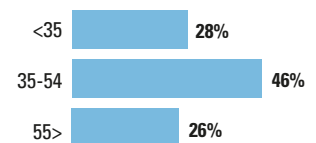
	COUNTRY	WHO REGION
Total population (UN population prospects, 2019)	25203200	1930866657
UHC Service Coverage Index (0-100 points, 2017)	87	-
Life expectancy at birth m/f (years, 2016)	81.0/84.8	75.0/78.9
Probability of dying under five (per 1 000 live births, 2018)	3.7	11.8
Probability of dying between 15 and 60 years m/f (per 1 000 population, 2016)	77/45	104/69
Gross domestic product (GDP) (per capita US\$, 2017)	57917	11286
Current health expenditure as a per cent of GDP (2017)	9.2	7.1
Current health expenditure per capita (US\$, 2017)	5332	1026

Source: WHO

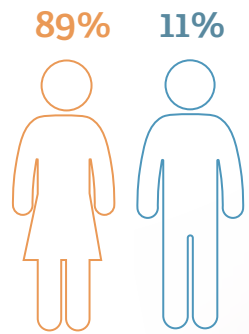
Nursing stock and density 2013-2018



Age distribution



Sex distribution



Nurse mobility

Foreign trained **17.96%**
Foreign born **36.07%**

Country capacity on:

✓ Yes ✖ Partial ✗ No NR No Response

EDUCATION REGULATION

- Master list of accredited education institutions ✓
- Accreditation mechanisms for education institutions ✓
- Standards for duration and content of education ✓
- Standards for interprofessional education ✓
- Standards for faculty qualifications[†] ✓

PRACTICE REGULATION

- Nursing council/authority for regulation of nursing[†] ✓
- Fitness for practice examination[†] ✗
- Continuing professional development ✓
- Existence of advanced nursing roles ✓

WORKING CONDITIONS

- Regulation on working hours and conditions ✓
- Regulation on minimum wage ✓
- Regulation on social protection ✓
- Measures to prevent attacks on HWs NR

GOVERNANCE AND LEADERSHIP

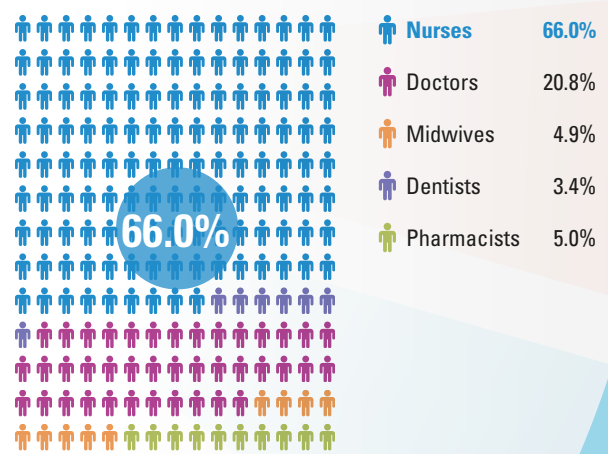
- Chief Nursing Officer position[†] ✓
- Nursing leadership development program[†] ✓
- National association for pre-licensure students[†] ✓

Nursing personnel (latest year) **287405**

Nursing professionals	Nursing associates	Nurses not further defined
287405	0	0

Share of professional nurses	Density	Graduates per year	Minimum duration of training
100%	116.8 per 10 000 population	13607	3 years

Share of nurses within the health workforce



Issues for consideration

Density above threshold, no estimation for shortage.

*As compared to a benchmark density. Details in State of the world's nursing 2020 report and Global Strategy on Human Resources for Health: Workforce 2030

Source: National Health Workforce Accounts (NHW), 2020 except †. Latest available data are displayed. Includes multiple data sources such as the OECD/Eurostat/WHO EURO Joint Data Collection, labour force survey, census data and estimates from WHO for shortages. Stock and density projection by 2030 based on a simple stock and flow model. See full report for further details. NR=Not reported. Data as of 10 March 2020.